

PageFlip Firefly

Bluetooth/USB Pedal

User Guide



Legal Notice

Copyright ©2014 PageFlip Inc. All rights reserved.

Information in this document is subject to change without notice. All statements, information, and recommendations in this manual are believed to be accurate but may include inadvertent technical inaccuracies or typographical errors. PageFlip Inc. provides this information “as is”, without warranty of any kind, either expressed or implied, including any implied warranties of merchantability or fitness for a particular purpose. No part of this manual may be reproduced, stored in a retrieval system, or transmitted in any form or any means electronic or mechanical, including photocopying and recording for any purpose other than the purchaser’s personal use without the consent of PageFlip Inc.

PageFlip Inc.
Woodmere, NY 11598
USA

www.pageflip.com
support@pageflip.com

Version 1.0
February 1, 2014

PageFlip Firefly User Guide

FCC/CE Notice

This device complies with Part 15 of the FCC Rules. Operation is subject to the following two conditions:

- (1) This device may not cause harmful interference, and
- (2) this device must accept any interference received, including interference that may cause undesired operation.

Changes or modifications not expressly approved by the party responsible for compliance could void the user's authority to operate the equipment.

PageFlip Firefly
FCC ID: XKEFIREFLY01

This equipment complies with FCC radiation exposure limits set forth for an uncontrolled environment. This equipment should be installed and operated with minimum distance 20cm between the radiator and your body. This transmitter must not be co-located or operating in conjunction with any other antenna or transmitter.

Safety Notice / Warning

Please read the following safety instructions carefully to safely and correctly operate this device. PageFlip assumes no responsibility for property damage or personal injury.

1. Do not place any container filled with liquid on the device.
2. Do not use a voltage other than the specified one.
3. Do not plug AC adapter into socket with wet hands.
4. Always hold case before removing AC adapter plug.
5. Do not disassemble or modify the device.

IC Notice

This device complies with Industry Canada license-exempt RSS standard(s). Operation is subject to the following two conditions:

- (1) This device may not cause harmful interference, and
- (2) this device must accept any interference received, including interference that may cause undesired operation of the device.

Le présent appareil est conforme aux CNR d'Industrie Canada applicables aux appareils radio exempts de licence. L'exploitation est autorisée aux deux conditions suivantes:

- (1) l'appareil ne doit pas produire de brouillage, et
- (2) l'utilisateur de l'appareil doit accepter tout brouillage radioélectrique subi, même si le brouillage est susceptible d'en compromettre le fonctionnement

Under Industry Canada regulations, this radio transmitter may only operate using an antenna of a type and maximum (or lesser) gain approved for the transmitter by Industry Canada. To reduce potential radio interference to other users, the antenna type and its gain should be so chosen that the equivalent isotropically radiated power (eirp) is not more than that necessary for successful communication.

Conformément à la réglementation d'Industrie Canada, le présent émetteur radio peut fonctionner avec une antenne d'un type et d'un gain maximal (ou inférieur) approuvé pour l'émetteur par Industrie Canada. Dans le but de réduire les risques de brouillage radioélectrique à l'intention des autres utilisateurs, il faut choisir le type d'antenne et son gain de sorte que la puissance isotrope rayonnée équivalente (pire) ne dépasse pas l'intensité nécessaire à l'établissement d'une communication satisfaisante.

Contents

1 WELCOME	5
2 FEATURES	7
3 PACKAGE CONTENTS	9
4 BASIC OPERATION	10
4.1 Battery Installation	10
4.2 AC Adapter	11
4.3 Powering On the Pedal	12
4.4 Bluetooth Pairing	13
4.5 Pedal Mode Selection	14
4.6 Reprogramming the Pedal Modes	15
4.7 Triggering the Pedal	18
4.8 Autorepeat Function	19
4.9 Virtual iPad Keyboard	20
5 PRODUCT SPECIFICATION	21
6 MAINTENANCE	22
7 WARRANTY	23
8 GUARANTEE	24
9 FREQUENTLY ASKED QUESTIONS	25

1 WELCOME

Congratulations on your purchase of the PageFlip Firefly Bluetooth/USB pedal! This product was designed to meet the needs of musicians, people with disabilities, and avid readers who struggle with the challenge and inconvenience of page turning. PageFlip Firefly works exclusively with digital documents, web pages, and image collections on any tablet or computer. By simply tapping the dual pedal of the PageFlip Firefly, the digital content can now be flipped or scrolled in either the forward or reverse directions for convenient hands-free page turning.

The PageFlip Firefly emulates a standard keyboard and works with any software that uses keyboard strokes to navigate through digital files. For added versatility, the user may select among five preset modes for the dual pedals: PageUp/PageDown, Left/Right arrow, Up/Down arrow, Left/Right mouse click, and Space / Enter. Changing modes is as simple as pressing a button. For added versatility, the pedal functions may be re-programmed with free software available on www.pageflip.com. Simply pair the pedal to a Windows computer using Bluetooth and run the software to edit the pedal modes. This operation must use Bluetooth, not the USB cable, as the means to connect the pedal to the computer.

The PageFlip Firefly is ideal for musicians who can now keep their hands, and their focus, on their instruments rather than struggle with turning sheet music. It is also ideal for people with disabilities who can more easily tap a pedal than attempt to manipulate pages of a standard book or magazine. The convenient mode buttons maximize versatility for use with a wide variety of software to scroll, browse, and navigate through eBooks, PDF files, Word, Powerpoint, web pages, and images.

PageFlip Firefly may be operated in wireless or wired mode. Wireless connectivity is achieved via Bluetooth. All Apple products and most mod-

ern tablets/computers are equipped with Bluetooth, so this mode is nearly universal. An optional USB Bluetooth dongle is available from PageFlip to interface to computers that are not equipped with Bluetooth 2.1 (or later). If the user prefers wired connectivity, the supplied USB cable can be connected between the pedal and tablet/computer. Note that iPads require an optional Camera Connection Kit to interface with the supplied USB cable.

The PageFlip Firefly features LED lighting to emit a discrete glow on each of the two pedals, hence the name “Firefly.” This lighting permits the pedal to be easily found in orchestra pits, dark stages, and cluttered environments. If the pedal lights are not needed, we recommend using the light switch to turn off the LED lighting to preserve battery life.

The PageFlip Firefly goes to sleep after 30 minutes of inactivity. Although only a simple tap of the pedal is needed to wake the pedal, the long 30-minute period prevents the user from having to make this effort under most common performance conditions. No other pedal offers such a long inactivity period before entering sleep mode for the benefit of the user.

PageFlip Firefly is compact, rugged, silent, and easy to use. Since it works with digital content, it guarantees 100% reliability in turning one page at a time without moving parts or noise. Just pair the pedal with a Bluetooth-enabled computer or connect it to the tablet/computer via the USB cable, open up any digital file, and tap the pedal to begin enjoying hands-free reading. Be prepared to enjoy the benefits of the PageFlip Firefly Bluetooth/USB pedal for automatic page turning!

2 FEATURES

- **Ease of Use**

Simply open a digital file and press either pedal of the PageFlip Firefly to turn a page forwards or backwards.

- **Convenience**

Permits hands-free reading of vast libraries of scanned, purchased, or freely downloaded digital content. There is no need to stop playing your musical instrument or wait for a care-giver to turn the page.

- **Reliability**

Turns one page at a time with 100% accuracy. Navigation of digital content eliminates the risk of turning multiple pages at once, which is a problem typically associated with physical books.

- **Versatility**

Press a mode button to select pedal functions for enhanced software compatibility: PageUp/PageDown, Left/Right arrow, Up/Down arrow, Left/Right mouse click, and Space / Enter. The pedals may be reprogrammed for added versatility. Download the free software from www.pageflip.com.

- **Robust Operation**

A Repeat switch enables continuous scrolling while the pedal is pressed down. Disable this feature for musical performances to prevent inadvertent page turns in case of a slow pedal release or to rest your foot on the pedal between page turns.

- **Wireless or Wired Connectivity**

The PageFlip Firefly communicates wirelessly with the tablet/computer up to a range of 10 meters using standard Bluetooth 3.0 technology. For those users who lack a Bluetooth-equipped device or simply prefer a wired connection, the pedal can be connected directly to their device via the supplied USB cable.

- **Compatibility**

Works with iPad and Android tablets using select apps that accept keyboard commands, such as arrow keys. Compatible apps are listed on www.pageflip.com. Also works with any Windows, Mac, or Linux computer. Users may purchase a Bluetooth USB dongle from the website to bring the full benefits of this wireless pedal to any computer that is not Bluetooth compliant.

- **Unique Pairing**

Multiple pedals can be operated in the same room without interference. The Bluetooth pairing process uniquely establishes wireless connectivity between the PageFlip Firefly and one computer. Bluetooth pairing is automatically achieved without a passkey once the pedal is selected among a list of discovered Bluetooth devices on the tablet/computer.

- **External Switches**

The PageFlip Firefly is compatible with a wide array of external switches. Commonly used sip-and-puff and Jelly Bean pushbutton switches may be plugged into the auxiliary switch outlet(s) via two 1/8" mono plugs. The functions of the external switches may be programmed to operate independently of the built-in pedals to offer two additional pedal functions.

- **Auto Power-Off Function**

PageFlip Firefly automatically turns itself off 30 minutes after the last operation is performed. The pedal has a battery life of 200 hours of continuous page turning, or about 200,000 page turns.

- **Portability**

Small sturdy pedal operates on AC power or two AA batteries.

- **Technical Support**

Additional information and video tutorials can be found at www.pageflip.com

3 PACKAGE CONTENTS

This package contains the following items. If any items are missing, please contact the dealer where you purchased the product.

1. PageFlip Firefly Bluetooth/USB Pedal
2. USB cable (6 feet)
3. Quickstart Guide (English/German/French/Spanish)



Figure 1: Package contents: PageFlip Firefly and USB cable.

4 BASIC OPERATION

Please read the operating instructions carefully before first use. PageFlip Firefly is designed to work with a wide variety of software to display electronic documents. It is important that the user closely follow the directions below in order to maximize performance, reliability, and reading pleasure.

4.1 Battery Installation

1. Turn off the PageFlip Firefly pedal before inserting the batteries.
2. Remove the battery cover on the bottom of the pedal.
3. Install two new AA batteries.
4. Slide the battery cover back on.

Note: To conserve battery power, turn off device when not in use. The unit automatically goes to sleep after 30 minutes of inactivity, but can awake instantly upon a pedal tap. You will notice that the pedal is asleep if the POWER switch is set to On but no LEDs are lit next to the pedal mode buttons. A simple tap will initiate Bluetooth pairing immediately.

4.2 AC Adapter

In addition to being battery-operated, PageFlip Firefly may also be powered by connecting it to a computer using the supplied USB cable (Fig. 1). Simply plug one end of the power cable into the micro-USB outlet on the rear of the PageFlip Firefly (Fig. 2) and plug the other end into a computer's USB port.



Figure 2: Rear view of PageFlip Firefly. Attach the micro-USB end of the 6' USB cable (Fig. 1) into the rear micro-USB outlet and connect the other end into a computer USB port.

4.3 Powering On the Pedal

1. Slide the POWER switch to the On position.
2. The pedal will attempt to pair itself with a computer.
3. For all new pairings, please refer to the Pairing instructions in Sec. 4.4.
4. For existing pairings, an LED will blink quickly (every second) for up to 30 seconds.
5. The LED will blink slowly (every four seconds) once the pairing is re-established.
6. Make sure the paired computer is on and awake.



Figure 3: Top view of PageFlip Firefly control panel.

4.4 Bluetooth Pairing

The following instructions assume that your tablet or computer is equipped with Bluetooth 2.1 or later. If you do not have Bluetooth, you may purchase a Bluetooth USB dongle from www.pageflip.com to bring the full benefits of this wireless pedal to any computer that is not Bluetooth compliant.

1. Press BLUETOOTH RESET (Fig. 2) to make pedal discoverable.
2. Five LEDs will flash in sequence while pedal is in discovery mode.
3. Enable Bluetooth on the computer to be paired.
4. Show Bluetooth devices on the computer and select "Premium Pedal."
5. Note: "Keyboard" may appear momentarily before "Premium Pedal."
6. The LED of the current pedal mode (Sec. 4.5) will now flash slowly (once every four seconds).

4.5 Pedal Mode Selection

The PageFlip Firefly emulates a standard keyboard and works with any software that uses keyboard strokes to navigate through digital files. For added versatility, the user may select among five preset pedal modes, as shown in Table 1. Simply press a button (Fig. 3) to change the mode. A flashing LED confirms the mode selection.

Pedal Mode	Function
PageUp/PageDown	Turn page
Left/Right Arrow	Turn page or move cursor
Up/Down Arrow	Turn page or move cursor
Left/Right Mouse click	Click left or right mouse button
Space/Enter	Press Space bar or Return key

Table 1: Five preset pedal modes and their functions.

Select the mode that achieves your intended goals. Results may vary based on the software. For instance, some software applications use PageUp/PageDown to advance between pages/screens, and use the arrow keys to move the cursor between characters or rows. Other programs accept the PageUp/PageDown or arrow keys interchangeably. Image viewers typically respond to Left/Right arrow but not Up/Down arrow. Experiment with the different modes and see which works best for your application. These options are made available to enhance pedal versatility by making it responsive to the widest array of software.

4.6 Reprogramming the Pedal Modes

1. Visit www.pageflip.com, scroll to the bottom, and click on the Software link to download the Firefly1.0.exe executable for Windows.
2. Pair the pedal to a Windows computer using Bluetooth (Sec. 4.4).
3. Run the Firefly software to see the interface shown in Fig. 4.
4. Note that "Connected" appears at the top to indicate a paired Firefly pedal. Pair the Firefly to the computer if "Disconnected" appears.
5. Five mode settings are listed for the left/right and external pedals.
6. Click on any field and type a character to reprogram the pedals.
7. Select "Save" to save the settings and confirm (Fig. 5).
8. Press MODE RESET (Fig. 2) or "Factory Settings" in software to restore default pedal modes.

PageFlip Firefly User Guide 4.6 Reprogramming the Pedal Modes

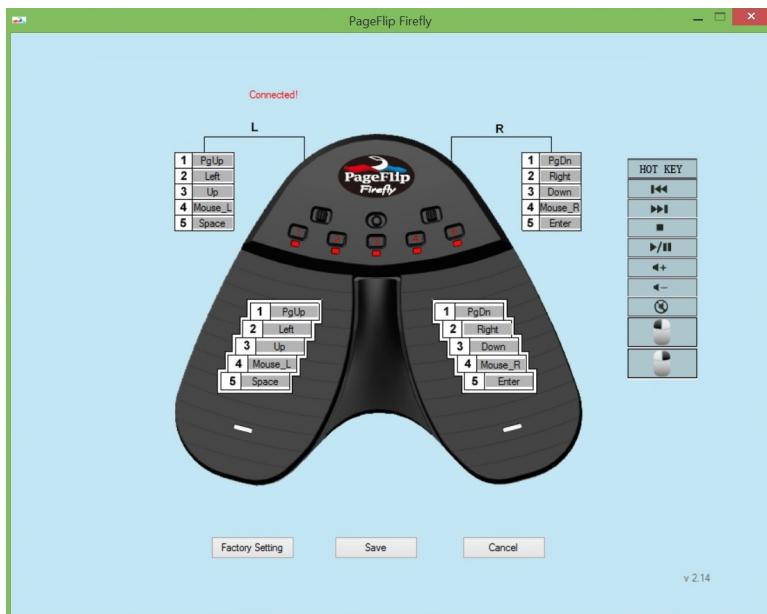


Figure 4: Initial window of pedal reprogramming software

PageFlip Firefly User Guide 4.6 Reprogramming the Pedal Modes

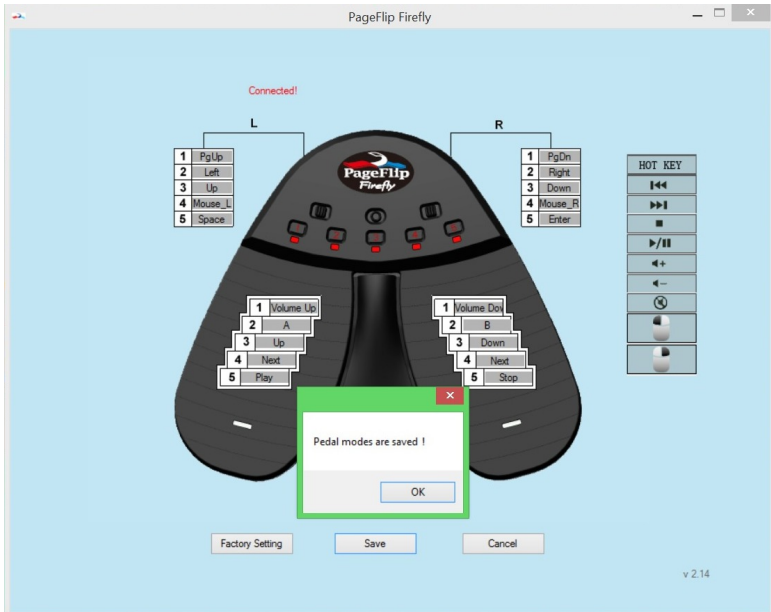


Figure 5: Move cursor into fields and type character or select hotkey to reprogram mode setting. Press "Save" to save settings and confirm. Notice that the external pedals may have different values than the integrated pedals.

4.7 Triggering the Pedal

The PageFlip Firefly Bluetooth pedal can be triggered by:

1. tapping the left or right pedal of the PageFlip Firefly
2. activating an external (auxiliary) switch

PageFlip Firefly works with sip-and-puff switches, AbleNet Jelly Bean pushbuttons, or any external switch that can be plugged into the two 1/8" mono outlets shown in Fig. 2. Use a plug adapter, if necessary, to convert other plugs for use with the unit. PageFlip does not supply plug adapters or external switches. Consult assistive technology vendors for more information about switches.

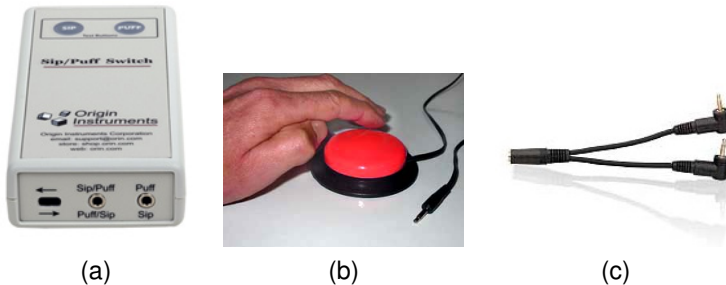


Figure 6: (a) A sip-and-puff switch can connect to the PageFlip Firefly auxiliary outlet via two 1/8" (3.5mm) mono plugs. (b) A Jelly Bean is a large pushbutton switch. Two such switches can be connected to the PageFlip Firefly to turn pages in either direction by using the two outlets for 1/8" mono plugs. Plug one switch into the R outlet to turn pages forward or plug both into the L and R outlets for bidirectional operation. (c) Use a 1/8" stereo to dual 1/8" mono plug adapter for converting stereo plugs into two mono plugs.

4.8 Autorepeat Function

The PageFlip Firefly features an autorepeat function that may be set by the REPEAT switch (Fig. 3). If autorepeat is on, a continuous stream of commands is sent to the computer as long as the pedal is pressed down. This behavior, which is identical to that of a keyboard, is useful for fast browsing or scrolling. The autorepeat function applies only to the following pedal modes: PageUp/PageDown, Left/Right arrow, and Up/Down arrow.

Enable Autorepeat

1. Slide the REPEAT switch to the On position.
2. Tap pedal quickly to turn one page.
3. Tap and hold the pedal to turn successive pages quickly.

Disable Autorepeat

1. Slide the REPEAT switch to the Off position.
2. Tap pedal slowly or quickly to turn one page.

For musical practice or performance, it is recommended to disable the autorepeat function. This prevents turning multiple pages inadvertently if the pedal is held down too long. This also permits the user to rest their foot on the pedal until the next page is turned with another foot tap.

4.9 Virtual iPad Keyboard

The PageFlip Firefly emulates a keyboard while interacting with the computer. This may prevent the virtual iPad keyboard from appearing when the focus is brought to a text field. In order to eject the virtual keyboard to make it visible, please press the current mode button that lies next to the blinking LED. The current mode will remain unchanged while successive presses to that button will toggle the appearance and disappearance of the virtual keyboard on the iPad.

5 PRODUCT SPECIFICATION

Item	Specifications
Model Name	PageFlip Firefly
Model Number	PFFIREFLY-01
Dimensions	6.8 x 5.8 x 1.4 inches (173 x 147 x 36 mm)
Weight (w/o batteries)	9.6 ounces (271.2 grams)
Power Requirements	3V, 40mA (2 AA batteries)
Power Consumption:	
Operating Mode	4.4-6.8 mA
Bluetooth Pairing	1.4-50 mA
Standby	0.24-4.1 mA
Sleep	0.302 mA
Pedal light	5 mA additional
Battery Life (2 AA batteries):	
Pedal light off	400 hours of continuous turning (200K page turns)
Pedal light on	200 hours of continuous turning (100K page turns)
Output Power	-6 dBm to 4 dBm
Operating Distance	10 meters
Operating Frequency	2402-2480 MHz
Operating Temperature	32° – 140° F (0° C - 60° C)
Storage Temperature	-40° – 176° F (-40° - 80° C)
Warranty	One year

LED	Operating Condition
Off	Pedal powered off or asleep
Solid	Connected to external power source
All LEDs flash	Bluetooth discovery mode (BLUETOOTH RESET)
Quick flash (1 sec)	Attempting to pair with computer
Slow flash (4 sec)	Paired with computer
Three quick flashes	Low-battery condition

6 MAINTENANCE

Before cleaning the PageFlip Firefly, the following is recommended:

1. Turn off the power
2. Unplug the power cord
3. Take out the batteries

Gently wipe the PageFlip Firefly surface with a soft, dry, lint-free cloth.

Caution:

Do not use water, liquid detergent or solvents for cleaning. Liquids might drip into the device's mechanical or electronic parts and cause damage.

7 WARRANTY

PageFlip offers a one-year warranty on the PageFlip Firefly Bluetooth pedal. The warranty commences on the date of purchase. Should a unit fail during the warranty period, PageFlip will, at its option, repair or replace the damaged unit. Repaired or replaced units will be covered for the remainder of the original warranty period. This warranty does not apply to units that, after being examined by PageFlip, have been found to have failed due to customer abuse, mishandling, alteration, improper installation, or negligence. Furthermore, the warranty does not apply to defects that have negligible effect on the value or operation of the unit.

Defective units must be returned postage paid as a complete unit to PageFlip or its authorized distributor. Proof of purchase and a letter explaining the problem must accompany the returned unit. The warranty becomes void if repairs are undertaken by unauthorized persons and if original PageFlip parts are not used.

Products no longer covered by a warranty may be repaired for a nominal fee. All repairs are warranted for one year. Before returning a product for refund or repair, please send email to support@pageflip.com with a description of the problem. PageFlip will respond with instructions on how to expediently resolve the matter. Repair charges must first be approved for products no longer covered by the warranty.

8 GUARANTEE

PageFlip offers a 30-day money back guarantee if our products do not meet your needs or expectations. Products must be returned postage paid in new condition in the original packaging to honor this service. A 20% restocking fee applies. Contact support@pageflip.com for instructions.

Contact us at:

PageFlip, Inc.

Woodmere, NY

USA

support@pageflip.comwww.pageflip.com

9 FREQUENTLY ASKED QUESTIONS

Does the PageFlip Firefly work with the Apple iPad?

Yes. However, the pedal only works with software that accepts keyboard commands. The most popular compatible apps are Forscore, unrealBook, and Deepdish Gigbook. Other compatible apps include DrumSetlist Manager, Hymnals, iCue, iGigBook, iReal b, Loopy, Loopy HD, MuseScore Sheet Music Viewer, Music Binder, MusicReader, MusicPodium, My Lyric Book, NextPage, NextSong, OnSong, PiaScore HD, Play On Cue, Pocket Jamz Guitar Tabs, Pocket Jamz Piano Notes, PrompterPal, SampleWiz, Avid Scorch, Scorio Music Case, SeeScore, Finale SongBook, Sheet Music Direct, Scorecerer, Set List Maker, Setlists, Steinway Etude, TheGigEasy, Virtual Sheet Music, Teleprompt+, and Planning Center Music Stand. Please check www.pageflip.com for updated information.

Does the PageFlip Firefly work with all Android tablets?

The PageFlip Firefly works with Android tablets that support Bluetooth 2.1 + EDR (or later). This includes virtually all Android tablets. However, the pedal only works with Android apps that accept keyboard commands. Currently, this is limited to MobileSheets, MusicNotes, SongBook, Moon+ Reader, EBookDroid, Cool Reader, and ezPDF Reader. Please check www.pageflip.com for updated information.

Does the PageFlip Firefly work with all Windows and Mac software?

The PageFlip Firefly dual pedal emulates a keyboard that emits two key presses. The function of those keys is determined by the five mode buttons. Any software on a PC or Mac will be able to interpret these key presses, whether they were triggered by tapping the pedal or any computer keyboard.

Does the PageFlip Firefly work with the Amazon Kindle?

The PageFlip Firefly works with Kindle Fire HD. The older Kindle hardware does not support Bluetooth or include a Bluetooth USB port. However, Kindle software for the PC and Mac works with the pedal.

Which software is known to work with the PageFlip Firefly?

The PageFlip Firefly works with any software that uses PageUp/PageDown, arrow keys, or mouse clicks to advance through the electronic document. This includes any PDF reader, Microsoft Word, Powerpoint, web browsers, image viewers, and more.

Where can I find digital sheet music to download?

The best source for free classical music is the International Music Score Library Project (IMSLP) at imslp.org. Extensive collections of popular music can be found at freehandmusic.com, sheetmusicdirect.com, musicnotes.com, sheetmusiccore.com, or everynote.com. CD Sheet Music from Hal Leonard (halleonard.com) is a great source of scanned classical music conveniently available on CDs. Search the internet for "sheet music download" to get updated results.

How do I import my books or sheet music into my computer?

You must scan the physical pages. For best results, try to avoid the shadows near the book spine by using a flatbed book scanner such as the Plustek OpticBook 3600. Visit www.plustek.com for more details. A more cost-effective solution is to use a great new service provided by 1dollarscan.com. Simply mail them your books, and they will cut off the binding and scan the loose pages at 300dpi for \$1 per set of 100 pages. Additional charges apply for scanning at 600dpi or to apply a deskewing algorithm. Visit 1dollarscan.com for more information. Please note that this is a destructive process. You will get a pdf file for each book you send but you will sacrifice your book in the process. They discard the book after

chopping off the binding and scanning the pages.

Can I connect other foot pedals to the PageFlip Firefly to trigger page turns?

Yes, you can plug other foot pedals to the L/R jacks on the rear of the PageFlip Firefly. The L/R jacks accept 1/8" mono plugs. We deliberately designed this capability to accommodate the preferences of our diverse users. Therefore, if you have any particular switch that you prefer over the PageFlip Firefly's integrated pedal, then by all means plug it in!

Why are the LEDs not lit when I turn on the PageFlip Firefly?

Make sure to install two fresh AA batteries in the pedal. You can also power the pedal by using the supplied cable to plug into a computer's USB port.

What is the current pedal mode?

An LED is lit next to the current mode setting of the pedal. Simply press a different mode button to change the setting. The LED will turn off once the PageFlip Firefly enters sleep mode after 10 minutes of inactivity.

Why is the pedal not turning pages?

Confirm that the device "Premium Pedal" is paired to your computer and that the correct pedal mode is selected. Some software may require arrow keys while others may require PageUp/PageDown or other keystrokes. Try several modes until you find one that works. Note that if you use unreal-Book on the iPad, you must go to the app's settings (tap the gear icon) and set Network->BT Keyboard Connected to ON. NextSong switches can be left OFF. The app will then respond to the Up/Down Arrow keys.

Why is the pedal not turning pages on the unrealbook app?

Confirm that the device "Premium Pedal" is paired to your computer and

that the Up/Down arrow mode is set on the pedal. This is indicated by a blinking light next to the middle (third) mode button. Then, make sure you go to the app's settings (tap the gear icon) and set Network->BT Keyboard Connected to ON. The app will then respond to the Up/Down Arrow keys.

What are the different operating conditions signified by the LED?

A solid LED means that the pedal is plugged into a power source. If the BLUETOOTH RESET button is pressed, the pedal enters Bluetooth discovery mode and all the LEDs flash in sequence. The LED flashes once per second after the pedal is turned on and is attempting to establish a Bluetooth connection with a paired device. The LED flashes once every four seconds to signal that the pedal is already paired. Repeated bursts of three quick flashes signal a low-battery condition.

Why did PageFlip Firefly automatically shut down?

Automatic shutdown occurs after 30 minutes of inactivity. Tapping a pedal will make the PageFlip Firefly attempt to re-establish the Bluetooth connection. This may take a few seconds. If the computer continues to be unresponsive to the pedal, press the BLUETOOTH RESET button.

What do I do if Bluetooth pairing is unsuccessful?

Delete the device displayed in the host and press the BLUETOOTH RESET button on the pedal. Initial discovery mode may take up to 30 seconds. Follow your computer's instructions on how to pair Bluetooth devices.

Must the the pedal be paired each time I use it with the same device?

No, you must only pair the pedal once to a device (e.g., iPad/Mac/Windows computer). There is no need to pair it again once you turn on the pedal or device again. If you find that the pedal loses its pairing, then contact customer support. The only time you need to pair the pedal again with

a device is if you paired the pedal to another device in the interim. The pedal only remembers one pairing at a time.

Does PageFlip Firefly work with computers that have no Bluetooth?

Yes, only after you plug in an optional USB Bluetooth 3.0 dongle (not included) into the computer's USB port. Follow your computer's instructions for adding Bluetooth devices.

Does PageFlip Firefly turn pages at timed intervals?

No. PageFlip Firefly turns a page only when the user triggers it by tapping a pedal or activating an external switch.

When is the Autorepeat mode appropriate?

Turn on autorepeat if you are interested in fast browsing or scrolling. Turn off autorepeat to avoid multiple pages from turning at once if you inadvertently press the pedal too long. It is therefore best to turn off autorepeat during a performance.

Can I use the virtual iPad keyboard and the pedal at the same time?

Press the current mode (CM) button, which lies next to the blinking light, to eject/hide the virtual keyboard. Only the forScore app allows the virtual keyboard to appear on the iPad screen when the pedal is on, without requiring to press the CM button. To allow this mode in forScore, go to the forScore settings by tapping on the "..." upper right icon. Then, select "Settings" and scroll down to "Force virtual keyboard" and set it to "On". You will now be able to access the virtual keyboard to enter text within that app without having to turn off the pedal.

Can the PageFlip Firefly withstand rugged abuse?

The compact PageFlip Firefly is made of durable plastic and metal that can withstand stomping and rugged use. It is our premium pedal and was

designed to meet demanding standards.

What can I do to see the pedal more clearly in low-light situations?

Set the Light switch to the right to make the pedal glow in the dark.

Why the name "Firefly"?

The pedal derives its name from the firefly insect. The sleek design of the dual pedal is inspired by the graceful shape of the firefly wings. In addition, the lights on the pedal mimic the gently glow of the firefly.

Please visit us at www.pageflip.com for additional information, including manuals and videos. Please send email to support@pageflip.com with any technical questions or comments.